



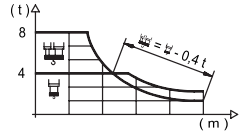
# 1 GENERALIDADES



Load Chart / 载荷曲线

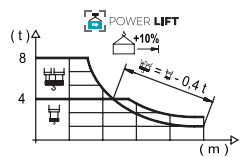
1100 Series

R (m)	1100 Series										1100 Series																																		
65.0	13.8	15	20	24.7	26.8	28	30	32.5	35	37.5	40	42.5	45	47.5	50	52.5	55	57.5	60	62.5	65	m	8000	7250	5160	4000	4000	3800	3520	3210	2950	2730	2530	2350	2200	2060	1940	1830	1730	1630	1550	1470	1400	kg	
62.5	15.1	20	23	26.9	29.3	30	32.5	35	37.5	40	42.5	45	47.5	50	52.5	55	57.5	60	62.5	65	65	m	8000	5720	4850	4000	4000	3890	3560	3270	3020	2810	2620	2450	2300	2160	2040	1930	1830	1740	1650	1550	1400	kg	
60.0	16.8	20	23	25	28	30.1	32.9	35	37.5	40	42.5	45	47.5	50	52.5	55	57.5	60	62.5	65	65	m	8000	6530	5540	5020	4380	4000	4000	3730	3450	3210	2990	2800	2630	2480	2340	2220	2100	2000	1850	1650	1400	kg	
57.5	17.4	20	23	25	28	30.1	34.1	35	37.5	40	42.5	45	47.5	50	52.5	55	57.5	60	62.5	65	65	m	8000	6800	5780	5240	4570	4000	4000	3890	3600	3350	3120	2930	2750	2590	2450	2320	2200	2100	2000	1850	1650	1400	kg
55.0	17.9	20	23	25	28	30	32.1	35.1	37.5	40	42.5	45	47.5	50	52.5	55	57.5	60	62.5	65	65	m	8000	7020	5970	5410	4730	4350	4000	4000	3720	3460	3230	3030	2840	2680	2530	2400	2300	2200	2100	2000	1850	1650	kg
52.5	17.6	20	23	25	28	31.8	34.7	35	37.5	40	42.5	45	47.5	50	52.5	55	57.5	60	62.5	65	65	m	8000	6920	5880	5330	4660	4000	4000	3970	3670	3410	3190	2990	2810	2650	2500	2370	2270	2170	2070	1970	1870	1770	kg
50.0	19.0	20	23	25	28	30	32	34.3	37.6	40	42.5	45	47.5	50	52.5	55	57.5	60	62.5	65	65	m	8000	7560	6430	5840	5110	4710	4350	4000	4000	3730	3490	3270	3070	2900	2730	2570	2420	2270	2120	2000	1850	1650	kg
47.5	18.9	20	23	25	28	30	32	34.0	37.3	40	42.5	45	47.5	50	52.5	55	57.5	60	62.5	65	65	m	8000	7490	6380	5790	5060	4660	4310	4000	4000	3700	3460	3240	3050	2880	2710	2550	2400	2250	2100	2000	1850	1650	kg
45.0	19.9	23	25	28	30	32	35.9	39.4	40	42.5	45	47.5	50	52.5	55	57.5	60	62.5	65	65	65	m	8000	6780	6150	5390	4970	4600	4000	4000	3940	3680	3450	3250	3050	2880	2710	2550	2400	2250	2100	2000	1850	1650	kg
42.5	20.0	23	25	28	30	32	36.0	39.6	40	42.5	45	47.5	50	52.5	55	57.5	60	62.5	65	65	65	m	8000	6810	6180	5410	4990	4620	4000	4000	3960	3700	3470	3270	3070	2900	2730	2570	2420	2270	2120	2000	1850	1650	kg
40.0	20.0	23	25	28	30	32	36.0	39.6	40	42.5	45	47.5	50	52.5	55	57.5	60	62.5	65	65	65	m	8000	6810	6180	5410	4990	4620	4000	4000	3960	3700	3470	3270	3070	2900	2730	2570	2420	2270	2120	2000	1850	1650	kg
37.5	19.9	23	25	28	30	32	35.9	39.4	40	42.5	45	47.5	50	52.5	55	57.5	60	62.5	65	65	65	m	8000	6780	6150	5390	4970	4600	4000	4000	3940	3680	3450	3250	3050	2880	2710	2550	2400	2250	2100	2000	1850	1650	kg
35.0	20.1	23	25	28	30	32	35	37.5	40	42.5	45	47.5	50	52.5	55	57.5	60	62.5	65	65	65	m	8000	6870	6240	5470	5040	4660	4250	4000	3950	3690	3460	3260	3060	2890	2720	2560	2410	2260	2110	2000	1850	1650	kg
32.5	20.1	23	25	28	30	32	35	37.5	40	42.5	45	47.5	50	52.5	55	57.5	60	62.5	65	65	65	m	8000	6870	6240	5470	5040	4660	4250	4000	3950	3690	3460	3260	3060	2890	2720	2560	2410	2260	2110	2000	1850	1650	kg
30.0	20.1	23	25	28	30	32	35	37.5	40	42.5	45	47.5	50	52.5	55	57.5	60	62.5	65	65	65	m	8000	6840	6210	5440	5100	4700	4300	4000	3950	3690	3460	3260	3060	2890	2720	2560	2410	2260	2110	2000	1850	1650	kg



Load Chart Powerlift / 载荷曲线 Powerlift

R (m)	1100 Series										1100 Series																																				
65.0	14.5	18	20	23	26.0	28.8	30	32.5	35	37.5	40	42.5	45	47.5	50	52.5	55	57.5	60	62.5	65	m	8000	6220	5500	4650	4000	4000	3830	3500	3210	2970	2760	2570	2400	2260	2120	2000	1890	1790	1700	1620	1540	kg			
62.5	15.8	18	20	23	25	28.5	31.6	32.5	35	37.5	40	42.5	45	47.5	50	52.5	55	57.5	60	62.5	65	m	8000	6900	6170	5180	4680	4000	4000	3870	3561	3294	3060	2855	2673	2510	2364	2232	2112	2002	1902	1810	1710	1610	kg		
60.0	17.8	20	23	25	28	30	32.1	35.5	37.5	40	42.5	45	47.5	50	52.5	55	57.5	60	62.5	65	65	m	8000	7010	5960	5410	4720	4350	4000	4000	3770	3510	3278	3072	2887	2722	2573	2437	2313	2200	2100	2000	1850	1650	kg		
57.5	18.5	20	23	25	28	30	33.4	37.0	37.5	40	42.5	45	47.5	50	52.5	55	57.5	60	62.5	65	65	m	8000	7320	6230	5650	4940	4550	4000	4000	3940	3664	3423	3208	3017	2845	2690	2549	2420	2310	2200	2100	2000	1850	1650	kg	
55.0	19.1	20	23	25	28	30	32.5	34.4	38.1	40	42.5	45	47.5	50	52.5	55	57.5	60	62.5	65	65	m	8000	7580	6450	5850	5120	4720	4280	4000	3790	3541	3320	3123	2946	2785	2640	2500	2360	2220	2080	1940	1800	1660	1520	kg	
52.5	18.9	20	23	25	28	30	32.5	34.0	37.7	40	42.5	45	47.5	50	52.5	55	57.5	60	62.5	65	65	m	8000	7480	6370	5780	5050	4660	4200	4000	3743	3497	3279	3084	2908	2750	2600	2450	2300	2150	2000	1850	1700	1550	1400	kg	
50.0	20.4	23	25	28	30	32.5	35	36.9	40.9	42.5	45	47.5	50	52.5	55	57.5	60	62.5	65	65	65	m	8000	6980	6340	5560	5120	4660	4260	4000	3829	3592	3352	3150	2946	2740	2530	2320	2110	1900	1690	1480	1270	1060	850	kg	
47.5	20.3	23	25	28	30	32.5	35	36.5	40.5	42.5	45	47.5	50	52.5	55	57.5	60	62.5	65	65	65	m	8000	6920	6280	5500	5070	4610	4220	4000	3795	3560	3350	3140	2930	2720	2510	2300	2090	1880	1670	1460	1250	1040	830	kg	
45.0	21.4	23	25	28	30	32.5	35	37.5	38.6	42.9	45.0	47.5	50	52.5	55	57.5	60	62.5	65	65	65	m	8000	7360	6690	5870	5420	4930	4510	4150	4000	3790	3580	3370	3160	2950	2740	2530	2320	2110	1900	1690	1480	1270	1060	850	kg
42.5	21.5	23	25	28	30	32.5	35	37.5	38.6	42.9	45.0	47.5	50	52.5	55	57.5	60	62.5	65	65	65	m	8000	7420	6740	5910	5460	4960	4540	4180	4000	3790	3580	3370	3160	2950	2740	2530	2320	2110	1900	1690	1480	1270	1060	850	kg
40.0	21.5	23	25	28	30	32.5	35	39.6	40.0	44.0	45.0	47.5	50	52.5	55	57.5	60	62.5	65	65	65	m	8000	7390	6720	5890	5440	4940	4530	4000	4000	3790	3580	3370	3160	2950	2740	2530	2320	2110	1900	1690	1480	1270	1060	850	kg
37.5	21.5	23	25	28	30	32.5	35	37.1	40.0	44.0	45.0	47.5	50	52.5	55	57.5	60	62.5	65	65	65	m	8000	7400	6730	5900	5440	4950	4530	4230	4000	3790	3580	3370	3160	2950	2740	2530	2320	2110	1900	1690	1480	1270	1060	850	kg
35.0	21.8	23	25	28	30	32.5	34.6	37.5	40.0	44.0	45.0	47.5	50	52.5	55	57.5	60	62.5	65	65	65	m	8000	7510	6820	5990	5520	5030	4610	4200	4000	3790	3580	3370	3160	2950	2740	2530	2320	2110	1900	1690	1480	1270	1060	850	kg
32.5	21.8	23	25	28	30	32.1	35	37.5	40.0	44.0	45.0	47.5	50	52.5	55	57.5	60	62.5	65	65	65	m	8000	7510	6830	5990	5530	5110	4700	4300	4000	3790	3580	3370	3160	2950	2740	2530	2320	2110	1900	1690	1480	1270	1060	850	kg
30.0	21.7	23	25	28	29.6	32	35	37.5	40.0	44.0	45.0	47.5	50	52.5	55	57.5	60	62.5	65	65	65	m	8000	7500	6820	5980	5610	5200	4800	4400	4000	3790	3580	3370	3160	2950	2740	2530	2320	2110	1900	1690	1480	1270	1060	850	kg



	<b>TFU-4.0</b>
	<b>4 kW</b>
0 ⇔ 90 m/min	

	<b>SWR-7.5</b>
	<b>2x 75 Nm</b>
0 ⇔ 0,7 rpm	

	<b>RT2-5.5</b>	<b>RT-7.5</b>
	<b>2x 55 Nm</b>	<b>2x 75 Nm</b>
20 m/min		
1XR31 3XR51		5XR71

	<b>RT-7.5VC</b>	<b>*</b>
	<b>2x 75 Nm</b>	
20 m/min		
5XR71		

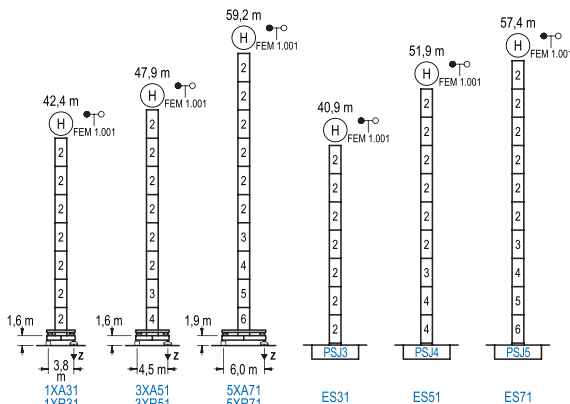
POWER / 功率				Operating voltage / 工作电压	Required power 需要功率
Hoist / 起升机构	Trolley / 变幅机构	Slewing / 回转机构	Travel / 行走机构		
HFU2-37-20	TFU-4.0	(2x) SWR-7.5	(2x) RT2-5.5 (2x) RT-7.5	400 V 3ph 50 Hz	110 kVA

Optional 选项
<b>*</b>

Heights Under Hook / 吊钩以下高度

∅ 1,6 m

FEM 1.001



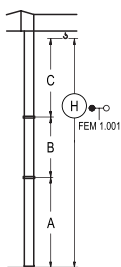
n°	Ref.	∅	h
2	SJ13	1,6	5,5
3	TSJ14	1,6	5,5
4	SJ14	1,6	5,5
5	TSJ15	1,6	5,5
6	SJ15	1,6	5,5

1xSJ13=1xSJ13M  
1xSJ15=1xSJ15M

R max. 最大压力	In operation 工作状态	1XR31.....73 t 3XR51.....71 t 5XR71.....77 t
	Out of service 非工作状态	1XR31.....71 t 3XR51.....78 t 5XR71.....110 t

Braced crane / 外附着塔机

FEM 1.001



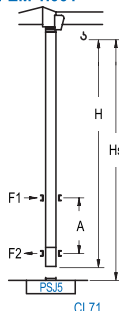
	1XA31	3XA51	5XA71
A max	29,1	34,6	45,9
A min	18,1	18,1	29,4
B max	22,0	22,0	22,0
B min	16,5	16,5	16,5
C max	35,3	35,3	35,3
C min	35,3	35,3	35,3
H max	64,4	86,4	69,9
		91,9	81,2
			103,2

	ES31	ES51	ES71
A max	27,6	38,6	44,1
A min	16,6	22,1	27,6
B max	22,0	22,0	22,0
B min	16,5	16,5	16,5
C max	35,3	35,3	35,3
C min	35,3	35,3	35,3
H max	62,9	84,9	73,9
		95,9	79,4
			101,4

Internal Climbing Crane / 内爬塔机

FEM 1.001



Hs < 400 m	A max (m) / A min (m)	
	43,9 m	16,8
38,4 m	14,1	9,0
32,9 m	11,4	7,0

n°	Ref.	∅	h
2	SJ13	1,6	5,5
3	TSJ14	1,6	5,5
5	TSJ15	1,6	5,5
23	CLS15-08	1,6	3,1

1xSJ13=1xSJ13M

Other wind zones or additional hook heights on request  
其他风区或另外的吊钩高度请咨询

